



T2i Remote Control

The T2i is the perfect combination of sleek, sophisticated design and the powerful control capabilities needed in today's automated home or office, at a budget-friendly price. The T2i utilizes advanced technologies such as the dual RF output capability (433MHz & 2.4GHz Zigbee®), an accelerometer, and a 2.8" edge-to-edge color LCD touchscreen for fast, reliable control. Beyond having superb ergonomics and great looks, the fully programmable user interface makes the T2i exceptionally easy to use, even displaying metadata feedback from supported electronics.* When not in use, the T2i slides into a low profile docking station equipped with a dock connector to ensure ultra-reliable battery charging.

Key Features

- Dual RF transmission capability uses 433MHz and 2.4GHz (utilizing Zigbee® technology).
- Two-way control using 2.4GHz Zigbee® and RTI control components.*
- Flush mount, 2.8" edge-to-edge color LCD touchscreen.
- Accelerometer provides "instant-on" control.
- Transmits IR and RF (or both - on a single button press!).
- Extremely wide IR transmitting frequency range.
- Greatly improved power management and battery charging.
- Thin, sleek design with superb ergonomics.
- Forty-seven programmable keypad buttons with intuitive layout for commonly used functions.
- Cursor button allows simple item list navigation.
- Soft-touch keypad buttons are backlit for easy control in darkened rooms.
- System includes a Lithium-Ion battery and docking station.
- Non-volatile Flash memory stores your system configuration even when power is not present.
- Field upgradable firmware.

Call 952-253-3100

www.rticorp.com



It's Under Control®

Specifications

Power.....	3.6 VDC, 900 mAh Lithium-Ion Battery Pack
Power Management.....	Automatic On/Off (integrated accelerometer)
Infrared Control Range.....	30 feet (9.1 meters) @ 60 degrees
Infrared Frequency Transmission Range.....	15kHz - 460kHz
Radio Frequency Control Range.....	Up to 100 feet (30.5 meters)
.....	(With optional System Interfaces/Processors)
Radio Frequency Carrier.....	802.15.4 @ 2.4GHz (Zigbee® Wireless Mesh Networking)
.....	433MHz
Operating Temperature.....	+32°F to +122°F (0°C to +50°C)
Operating Humidity.....	5% to 95% Non-condensing
Touchscreen Display.....	High-brightness color TFT LCD
.....	1/4 VGA (240x320 pixels) with 64K colors
.....	Integrated high-resolution touchscreen
Display Size.....	2.8 in (71mm) diagonal
Backlights.....	Blue/White LED (Keypad)
Nominal Run Time on Full Charge.....	3-5 hours, continuous use
.....	(Backlight setting dependent)
.....	(5 to 7 days on average use)
Standby Time on Full Charge.....	30 Days
Battery Charge Time.....	3-4 Hours
Total System Memory.....	32MBytes Flash (non-volatile) memory
Device Capability.....	Total number of devices is limited only by memory
Macro Capability.....	Unlimited steps in a single macro
.....	Total number of macros is limited only by memory
.....	Macro capability on every button
Communications.....	USB 2.0 programming port
Dimensions (L x W x D).....	10.0" (254mm) x 2.3" (58mm) x 0.7" (20mm)
Enclosure.....	High-impact molded ABS plastic
Weight.....	8.8 oz. (250g) with battery pack
Warranty.....	One Year (Parts & Labor) / 90 days on the battery

All specifications subject to change without notice

* NOTE: Two-way control requires 2.4GHz Zigbee® and additional RTI control components. The T2i programming and two-way control functionality are similar to the KX2, which limits the two-way feedback capabilities. If more robust two-way control and programming is required (ex. multi-layered graphics, album art) the T2x should be considered.



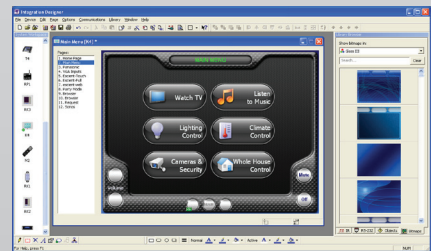
Accessories

RP-4	RF Control Processor
XP-3	Advanced Control Processor
XP-6	Advanced Control Processor
XP-8s	Advanced Control Processor
RM433	433MHz RF Antenna
ZM24	2.4GHz Zigbee Transceiver
CB-8	Touchpanel Connecting Block
CM-232	RS-232 Communication Module
CPB-1	Control Port Connecting Block
ECB-5	IR Connecting Block
ESC-2	Ethernet Serial Converter
IPE-4	IR Port Expander
PCM-4	Port Control Module
RCM-4	Ethernet Relay Module
vIRsa Mouse	IR Emitter



Other RTI Products

Virtual Panel	PC Software Interface (App)
RTiPanel	Mobile Software Interface (App)
SURFiR	Companion Remote Control
T1-B+	Remote Control
T2-Cs+	Remote Control
T2x	Remote Control
T3x	Remote Control
T3-V+	Remote Control
RKM-1+	In-Wall Audio Distribution Keypad
RK1+	2-4-8 Button In-Wall Keypad
KX2	2.8 inch In-Wall Touchpanel Keypad
RK3-V	3.5 inch In-Wall Touchpanel Keypad
KX7	7 inch In-Wall Touchpanel
CX7	Countertop/Under-Cabinet Touchpanel
AD-4x	Distributed Audio System
AD-8x	Distributed Audio System
RTiDock	Dock for Apple iPod®
CP-450	4 Channel Amplifier
CP-1650	16 Channel Amplifier



Integration Designer® Programming Software

5775 12th Avenue East, Suite 180, Shakopee, MN 55379
PH: (952) 253-3100 • Website: www.rticorp.com

RTI
It's Under Control®