



CX7 Tabletop Controller

From the kitchen countertop to the conference room, the hard-wired CX7 is perfect wherever “always on”, intuitive control is required. The 7” LCD touchpanel has adjustable tilt, allowing the display to be angled straight up to nearly flat. The CX7 can even be mounted inverted under a cabinet. Additional features include wired and wireless Ethernet for two-way control, digital video (motion JPEG) and web browsing, while analog audio/video inputs and stereo speakers provide video viewing from sources such as satellite TV or security cameras.

Key Features

- 800x480 WVGA LCD with integrated multi-touch capacitive touchscreen.
- Composite, S-video and component input for viewing video at 480i, 576i, 480p or 576p.
- Analog audio input and stereo speakers.
- Integrated 10/100 Base-T and 802.11 Wireless Ethernet.
- Built-in RS-232 port for one-way control without a separate control processor.
- Built-in high output IR port for direct control of devices through an IR connecting block.
- Powered using power supply or PoE (Power over Ethernet)
- Optional modules/processors provide advanced two-way control of electronics such as media servers, lighting, security and more!
- USB and Ethernet Programming.
- Adjustable tilt display (from 10°-90°) or CX7 can be mounted inverted under a cabinet.

Installation Options



Screen Tilt - 90°



Screen Tilt - 10°



Tabletop Installation



Under Cabinet Mount (Inverted)

Call 952-253-3100

www.rticorp.com



It's Under Control®

Specifications

Power.....	+9VDC to +16VDC, 1A max
Power Management.....	Adjustable backlight brightness/proximity sensor
Touchscreen Display.....	High-brightness color TFT LCD
.....	WVGA (800x480 pixels) with 65K colors
.....	Integrated high-resolution capacitive touchscreen
Display Size.....	7.0 in (177mm) diagonal
Display Backlight.....	Dual CCFL, 300nit
Infrared Output.....	Through control port, 200mA output
.....	Drives up to 1000 ft (300 m) of wire
Ethernet Port.....	10/100 Base-T with Power-over-Ethernet
Wireless Ethernet.....	802.11b/g
Operating Temperature.....	+32°F to +122°F (0°C to +50°C)
Operating Humidity.....	5% to 95% Non-condensing
Total System Memory.....	256M Bytes Flash (non-volatile) memory
Device Capability.....	Total number of devices is limited only by memory
Macro Capability.....	Unlimited steps in a single macro
.....	Total number of macros is limited only by memory
.....	Macro capability on every button
Communications.....	USB programming port
Video Input.....	Three, BNC Connectors
.....	Composite, S-Video or Component Analog Video
.....	NTSC/PAL/SECAM
Enclosure.....	High-impact molded ABS plastic
Mounting.....	Tabletop, or screws through mounting bracket (Included)
Dimensions (LxWxH).....	7.5" (190mm) x 7.3" (185mm) x 6.25" (159mm)
Weight.....	2.0Lbs (934g)
Warranty.....	One Year (Parts & Labor)

* All Specifications subject to change without notice.



CX7 Rear

CX7 Front

5775 12th Avenue East, Suite 180, Shakopee, MN 55379
 PH: (952) 253-3100 • Website: www.rticorp.com

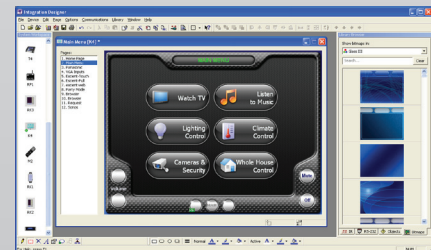
Accessories

XP-3	Advanced Control Processor
XP-6	Advanced Control Processor
XP-8s	Advanced Control Processor
CB-8	Touchpanel Connecting Block
CM-232	RS-232 Communication Module
CPB-1	Control Port Connecting Block
ECB-5	IR Connecting Block
ESC-2	Ethernet Serial Converter
IPE-4	IR Port Expander
PCM-4	Port Control Module
RCM-4	Ethernet Relay Module
vIRsa Mouse	IR Emitter



Other RTI Products

Virtual Panel	PC Control Application
RTiPanel	Mobile Device Control Application
SURFiR	Companion Remote for RTiPanel
T1-B+	Universal System Controller
T2-Cs+	Universal System Controller
T3-V+	Universal System Controller
U2	Weather Resistant Controller
RKM-1+	In-Wall Multi-Room Audio Keypad
RK1	In-Wall Keypad Controller
KX2	In-Wall Touchscreen Controller
RK3V	In-Wall Touchscreen Controller
KX7	In-Wall Touchscreen Controller
RK10	In-Wall Touchscreen Controller
RP-1	Remote Control Processor
XP-3	Remote Control Processor
XP-6	Remote Control Processor
XP-8s	Remote Control Processor
AD-4x	Distributed Audio System
AD-8x	Distributed Audio System



Integration Designer® Programming Software

RTI
 It's Under Control®