



T2x Wireless Interface

Defining engineering excellence - the remarkable T2x is the fifth generation of RTI's renowned T2 remote control platform. A full complement of hard buttons provide quick, intuitive control, while the 2.8" touchscreen interface can be custom tailored for full control of devices throughout the environment. Now, RTI is taking this design platform to unprecedented levels with cutting edge features that leverage today's technologies, to provide a more satisfying and reliable control experience than ever before. Innovations include grip sensors to keep the remote awake during use, an accelerometer for instant-on control, an edge to edge touchscreen allows improved gesture control, WiFi® and more. The combination of the T2x and an RTI control system provides the power, the customization, and the advanced features needed to make controlling today's electronics a true pleasure.

Key Features

- Dual RF transmission capability uses 433MHz and 2.4GHz (utilizing Zigbee® technology).
- Integrated 802.11b/g wireless Ethernet.
- Two-way control using 2.4GHz (Zigbee®) and RTI control components.
- Flush mount, edge-to-edge touchscreen for improved gesture support.
- Integrated grip sensors keep the remote awake while in use.**
- Accelerometer provides "instant-on" control.**
- Transmits IR and RF (or both - on a single button press!).
- Extremely wide IR transmitting frequency range.
- Greatly improved power management and battery charging.
- Programming can be updated wirelessly.
- Thinner, sleeker and more ergonomic.
- Forty-seven assignable/programmable keypad buttons.
- Cursor button allows simple scrolling list navigation.
- System includes a Lithium-Ion battery and docking station.
- Completely customizable and programmable.
- Non-volatile Flash memory stores your system configuration even when power is not present.

Call 952-253-3100

www.rticorp.com



It's Under Control®

Specifications

Power.....	3.6 VDC, 1800 mAh Lithium-Ion Battery Pack
Power Management.....	Automatic On/Off (integrated accelerometer / grip sensors)
Infrared Control Range.....	30 feet (9.1 meters) @ 60 degrees
Infrared Frequency Transmission Range.....	15kHz - 460kHz
Radio Frequency Control Range.....	Up to 100 feet (30.5 meters)
.....	(with optional System Interfaces/Processors)
Radio Frequency Carrier.....	802.15.4 @ 2.4GHz (Zigbee® Wireless Mesh Networking)
.....	433MHz
Wireless Ethernet.....	802.11b/g @ 2.4Ghz
Operating Temperature.....	+32°F to +122°F (0°C to +50°C)
Operating Humidity.....	5% to 95% Non-condensing
Touchscreen Display.....	High-brightness color TFT LCD
.....	1/4 VGA (240x320 pixels) with 64K colors
.....	Integrated high-resolution touchscreen
Display Size.....	2.8 in (71mm) diagonal
Backlights.....	Blue/White LED (Keypad)
Nominal Run Time on Full Charge.....	4-6 hours, continuous use
.....	(WiFi® & backlight setting dependent)
.....	(5 to 7 days on average use)
Standby Time on Full Charge.....	30 Days
Battery Charge Time.....	3-4 Hours
Total System Memory.....	128M Bytes Flash (non-volatile) memory
Device Capability.....	Total number of devices is limited only by memory
Macro Capability.....	Unlimited steps in a single macro
.....	Total number of macros is limited only by memory
.....	Macro capability on every button
Communications.....	USB 2.0 programming port
Dimensions (L x W x D).....	10.0" (254mm) x 2.3" (58mm) x 0.7" (20mm)
Enclosure.....	High-impact molded ABS plastic
Weight.....	8.8 oz. (250g) with battery pack
Warranty.....	One Year (Parts & Labor) / 90 days on the battery

All specifications subject to change without notice

* Two-way feedback available only when used with RTI control components.

** Grip sensors and accelerometer cannot be used simultaneously.



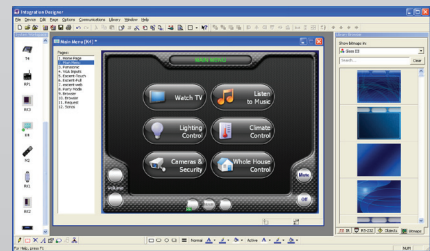
Accessories

RP-4	RF Control Processor
XP-3	Advanced Control Processor
XP-6	Advanced Control Processor
XP-8s	Advanced Control Processor
CB-8	Touchpanel Connecting Block
CM-232	RS-232 Communication Module
CPB-1	Control Port Connecting Block
ECB-5	IR Connecting Block
ESC-2	Ethernet Serial Converter
IPE-4	IR Port Expander
PCM-4	Port Control Module
RCM-4	Ethernet Relay Module
vIRsa Mouse	IR Emitter



Other RTI Products

Virtual Panel	PC Software Interface (App)
RTiPanel	Mobile Software Interface (App)
SURFiR	Companion Interface for RTiPanel
T2-Cs+	Wireless Interface
T2i	Wireless Interface
T2x	Wireless Interface
T3-V+	Wireless Interface
RKM-1+	Wired Multi-Room Audio Interface
RK1+	Wired Keypad Interface
KX2	Wired Interface
RK3V	Wired Interface
KX7	Wired Interface
CX7	Wired Interface
AD-4x	Distributed Audio System
AD-8x	Distributed Audio System
RTiDock	Dock for Apple iPod®
CP-450	4 Channel Amplifier
CP-1650	16 Channel Amplifier



Integration Designer® Programming Software

5775 12th Avenue East, Suite 180, Shakopee, MN 55379
 PH: (952) 253-3100 • Website: www.rticorp.com

RTI
 It's Under Control®