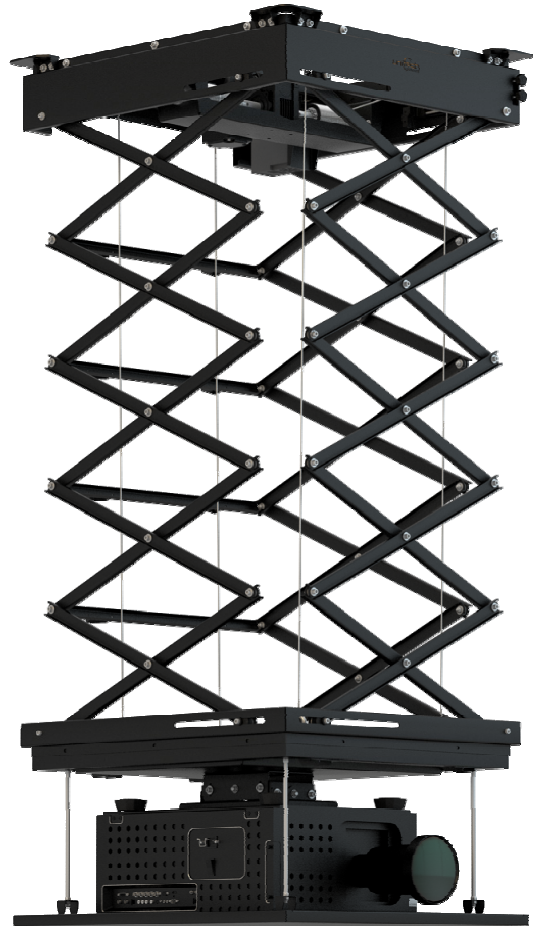
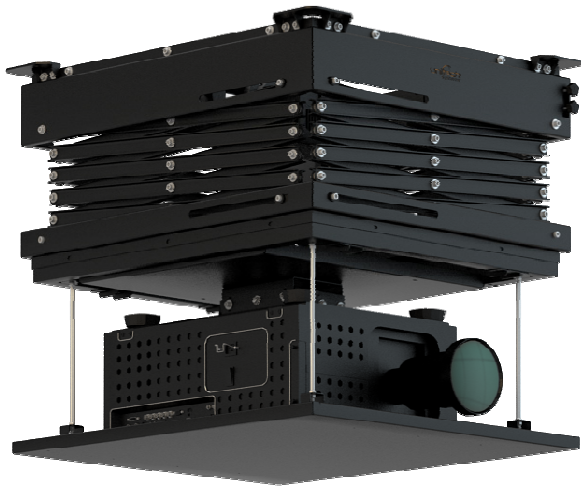


Unitech Systems standardizes the heavy duty projector ceiling lifts required in **professional applications**, for maximum load capacity up to 100kg and introduces the new series PLCS-V2.

Keeping the high standards in utility, quality and stability, this new line incorporates 3 sets of articulated scissor elements, providing stability in motion and 4 metal wires for maximum safety. The lift is equipped with projector mount which provides independent leveling adjustments for tilt and pitch and with speed motion controller which enables soft start/stop of motion function. The articulated scissors are equipped with cable holding points, in order to facilitate the cable routing and their secure motion with the lift.

Silent in operation and with standard drop distance up to 3m, the PCLS-V2 line is the reliable solution for professional applications!



Model	PLCS-1500-V2	PLCS-2000-V2	PLCS-2500-V2	PLCS-3000-V2
Space inside carriage for projector (WxL)	655x950mm			
Maximum load capacity (projector+ceiling cover)	100kg			
Lift dimensions (WxD)	885x1000mm			
Net vertical drop down length	1500mm	2000mm	2500mm	3000mm
Minimum required inner ceiling depth, with projector mount tilt&pitch position at 0degrees	401mm +projector height	438mm +projector height	475mm +projector height	512mm +projector height
Tilt / Pitch adjustment	±8.5degrees / ±6.5degrees			
Standard color of metallic parts	powder coating in RAL 9005 black or RAL 9016 white			
Power supply	230VAC-50/60Hz			
Standard control option	dry contacts control box			
Optional controls	RF or IR remote control, RS 232 or 485 ports			

ALL RIGHTS ARE STRICTLY RESERVED.

REPRODUCTION OR ISSUE TO 3RD PARTIES IN ANY FORM WHATEVER IS NOT PERMITTED WITHOUT WRITTEN AUTHORIZATION BY UNITECH SYSTEMS
All above information may change by the manufacturer without prior notice or obligation of any kind.