

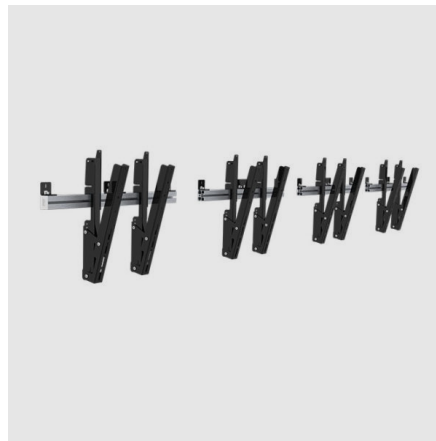
MULTI DISPLAY WALL TILT



You deserve the perfect angle

An easy way to mount a row of tilted screens

A solution that is easy to mount at a fixed tilt – particularly suitable for those seeking the perfect viewing angle when mounting several screens in a row. Can be used with screens from approximately 37", right up to 65". Simply choose as many modules as you need. Each module is supplied as a complete package with all necessary components, and can be setup in three easy steps. The solution makes it easy to place the screens exactly in line and allows edge-to-edge mounting. Can be tilted to three fixed angles: 5, 10 or 15 degrees.



ARTICLE NUMBER

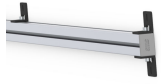
PW020001

SMS Multi Display Wall Tilt

INFO

| | |
|-------------------------|-----------|
| PLACEMENT | Wall |
| ROTATION | Landscape |
| LOCKABLE | Yes |
| MULTI DISPLAY | Yes |
| TILT : PLUS | 15 |
| VESA HORIZONTAL | 100 - 900 |
| VESA VERTICAL | 100 - 400 |
| MAX WEIGHT [KG] | 100 |
| SCREEN SIZE | 37 to 65" |
| WARRANTY [YEARS] | 5 |

ACCESSORIES



MULTI DISPLAY WALL PILLAR - 1X2000 MM

PW010016

MULTI DISPLAY WALL PILLAR - 2X2000 MM

PW010006